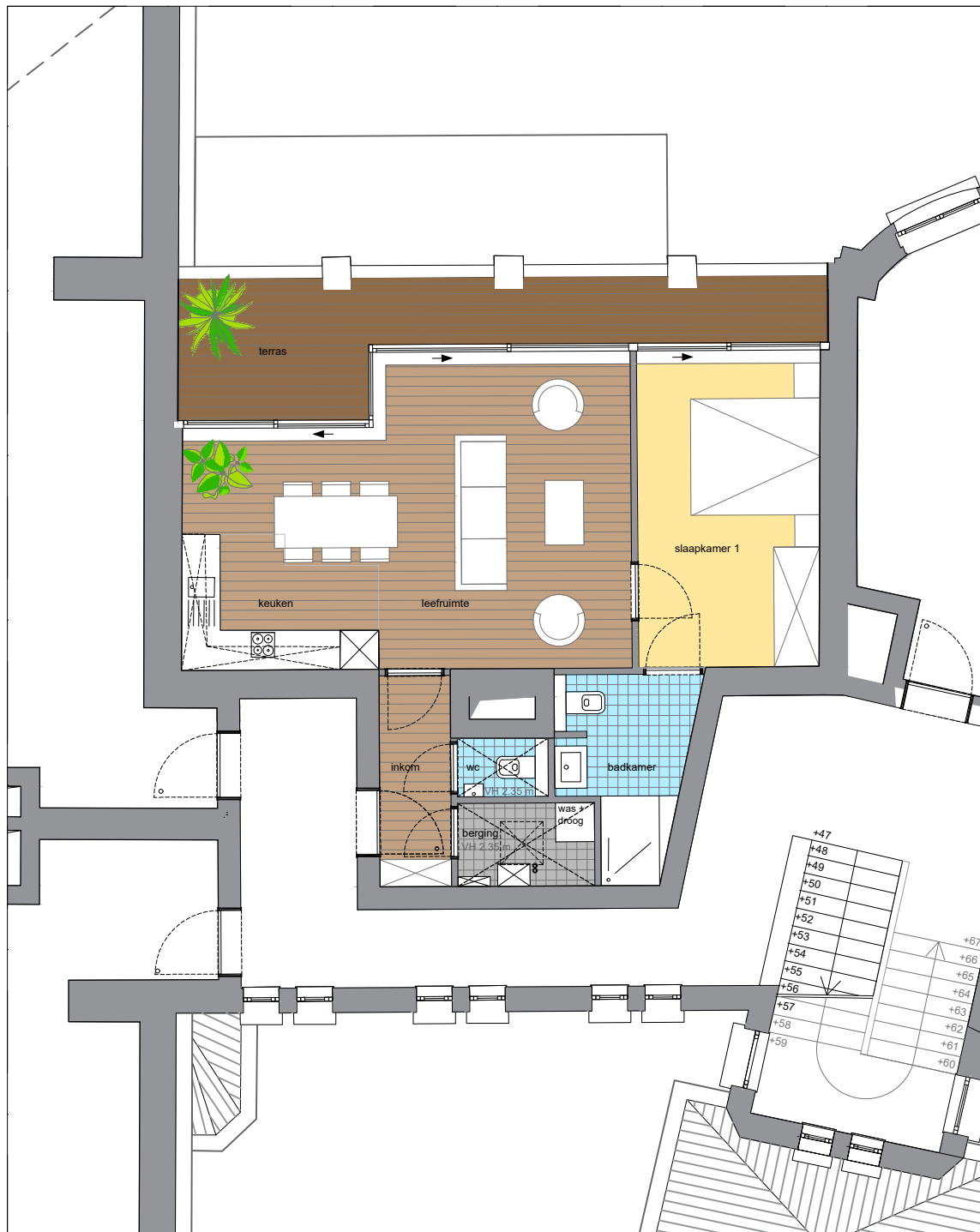


# Groot Park

## Sint-Vincentius

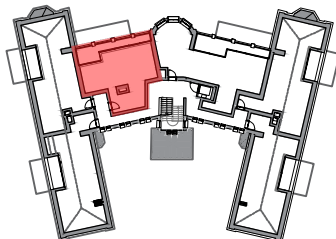
Appartement B2.L

68,3 m<sup>2</sup> + 16,5 m<sup>2</sup> terras

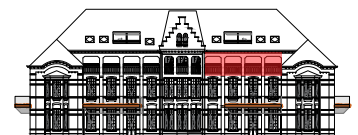


### NETTO OPPERVLAKTE

inkom	3,6 m <sup>2</sup>
wc	1,3 m <sup>2</sup>
leefruimte	24,8 m <sup>2</sup>
keuken	5,7 m <sup>2</sup>
berging	2,7 m <sup>2</sup>
slaapkamer 1	13,7 m <sup>2</sup>
badkamer	5,4 m <sup>2</sup>
terras	12,4 m <sup>2</sup>



grondplan verdieping +2\_nieuwe toestand



Zuidgevel